

JONIX cube

USE AND MAINTENANCE MANUAL



**AIR PURIFICATION DEVICE
WITH ADVANCED COLD PLASMA TECHNOLOGY**

These instructions are translated from Italian (the original language).

JONIX srl reserves every right concerning this manual, including the right to make any necessary change or improvement to its products and to the manual at any time and without notice. It is forbidden to reproduce in full or in part this manual without JONIX srl's consent.

TABLE OF CONTENTS

1 - GENERAL INFORMATION	5
1.1 - SERIAL NUMBER PLATE	5
1.2 - LIABILITY	5
1.3 - SYMBOLS	6
2 - WARNINGS AND GENERAL PROHIBITIONS	6
3 - THE OPERATING SYSTEM	8
4 - TECHNICAL DATA	9
4.1 - COMPONENT DESCRIPTION	9
4.2 - TECHNICAL FEATURES	9
4.3 - SPARE PARTS AVAILABLE ON ORDER	9
5 - RECEPTION, TRANSPORT AND STORAGE	10
5.1 - PACKAGING	10
5.2 - HANDLING AND TRANSPORT	10
5.3 - INSPECTION UPON RECEPTION	10
5.4 - STORAGE	10
5.5 - HANDLING DEVICE IN OPERATING CONDITIONS	10
6 - INSTALLATION AND COMMISSIONING	11
6.1 - SAFETY STANDARDS	11
6.2 - GETTING STARTED	12
6.3 - CHOOSING THE INSTALLATION SITE	12
6.4 - ELECTRICAL CONNECTIONS	13
6.5 - ELECTRIC POWER SUPPLY	13
6.6 - USING THE DEVICE	13
6.7 - CONTROL PANEL	14
7 - MAINTENANCE	16
7.1 - WARNINGS	16
7.2 - ROUTINE MAINTENANCE	16
7.2.1 - Cleaning the ionising generators	16
7.2.2 - Cleaning the filter	20
7.2.3 - External cleaning of the equipment	20
7.3 - SPECIAL MAINTENANCE	21
7.3.1 - Replacing the ionising generators	21
8 - OPERATIONAL CHECK AND TROUBLESHOOTING	24
9 - DISPOSAL	25
WARRANTY CONDITIONS	26
EC DECLARATION OF CONFORMITY	27

Thank you for choosing JONIX cube.

This manual contains information and what is deemed necessary for transporting, installing, using and maintaining the JONIX cube.

Improper installation of the device and/or failure to comply with the instructions in this manual, may invalidate the warranty that the Manufacturer issues for its products.

The Manufacturer is not liable for any direct and/or indirect damage caused by incorrect installation or damage caused by the units installed by inexperienced and/or unauthorised staff. At the time of purchase, check that the device is intact and complete.

The Manufacturer declines any liability in case of personal injury or property damage resulting from any improper use of the device or from the failure to observe the use and safety instructions specified in this manual. In any such case, any warranty claim will be void.

Any complaints must be submitted in writing within **8 days** of receiving the goods.

For more information, download of the manual or video tutorial, we invite you to visit www.jonixair.com.

1 - GENERAL INFORMATION

1.1 SERIAL NUMBER PLATE

The equipment described in this manual is provided with a plate containing the equipment and Manufacturer data:

- A Trade name
- B Item code
- C Serial Number
- D Electric power supply type
- E Electric power consumption



The JONIX cube ioniser is in compliance with Directives: 2006/42/CE, 2011/65/UE, 2014/30/UE, 2014/35/UE and subsequent amendments.

IMPORTANT WARNING

The JONIX cube ioniser is designed and made to sanitise the air in residential environments (homes, offices, shops) that are incompatible with toxic and flammable gases. It is therefore strictly forbidden to use the device in environments where the air is mixed with and/or altered by other gaseous compounds and/or solid particles. Using the device for purposes other than those intended and that do not comply with those described in this manual, will immediately relieve the manufacturer and its distributors from any direct and/or indirect liability.

1.2 LIABILITY

Failure to comply with the instructions contained in this Use and maintenance manual relieves the Manufacturer from any liability. For any information not included or that cannot be deduced from the Manual, consult the Manufacturer directly.

JONIX srl
 Viale Spagna 31/33
 35020 Tribano - PD - Italy
<http://www.jonixair.com>

In particular, if equipment maintenance is carried out in a way that is not in compliance with the instructions supplied, or in a way to jeopardise integrity or modify features, JONIX srl is relieved from any liability inherent to safety of persons and faulty operation of the equipments.

1.3 SYMBOLS

Please pay utmost attention to the following symbols and their meaning. They emphasise specific information, such as:



WARNING: It refers to integrations or suggestions concerning the proper use of the device.



HAZARD: It refers to dangerous situations that may result from the use of the device, in order to ensure personal safety.



FORBIDDEN: This symbol refers to operations that must be avoided under any circumstances, and hence forbidden.



HIGH VOLTAGE HAZARD!

Do not open or remove any doors or protections before disconnecting the voltage supply.



WARNING!

It is mandatory to use protective gloves.



WASTE FROM ELECTRICAL AND ELECTRONIC EQUIPMENT.

The crossed-out wheelie bin symbol on the equipment label indicates that the equipment is compliant with the Waste Electrical and Electronic Equipment (WEEE) Directive. Disposing of the equipment freely in the environment or illegally disposing of the equipment are punishable by law.

2 - WARNINGS AND GENERAL PROHIBITIONS



This instruction manual is an integral part of the device and therefore must be kept carefully and must ALWAYS accompany the device, even in the event that it is sold to another owner or user. In the event that it is damaged or lost contact JONIX srl for another copy or download the document from www.jonixair.com.



Repairs and maintenance work must be carried out by JONIX srl authorised staff or by qualified staff according to the provisions set out by this manual. Do not alter or tamper with the device as it can lead to hazards and the manufacturer of the device shall not be liable for any damage caused.



After removing the packaging check that the contents are intact and complete. In the event of a noncompliance please contact the Company that sold you the device.



When installing and operating this product, it is mandatory to observe the requirements and instructions specified in this manual.



JONIX srl disclaims any liability for damage caused to people, animals or property due to installation, adjustment and maintenance errors or by improper use.

Please note that the use of products that require electricity, involves the observance of some crucial safety rules such as:



This device is not intended for use by people (including children) with reduced physical, mental or sensory capabilities or without experience and knowledge, unless they are supervised or are given instructions to use the appliance by a person responsible for their safety. Take suitable precautions to prevent children from playing with the device.



Do not touch the device if you are barefoot and with parts of the body that are wet or damp.



Do not carry out any maintenance or cleaning operations without having first disconnected the device from the mains, by turning the main system switch to “OFF”.



Do not alter the safety or adjustment devices without prior authorisation and instructions from the manufacturer of the device.



Do not pull, detach or twist the electrical wires coming out of the device, even when it is disconnected from the mains.



Do not stand, sit and/or rest any type of object on the device.



Do not spray or throw water or other liquids directly onto the device.



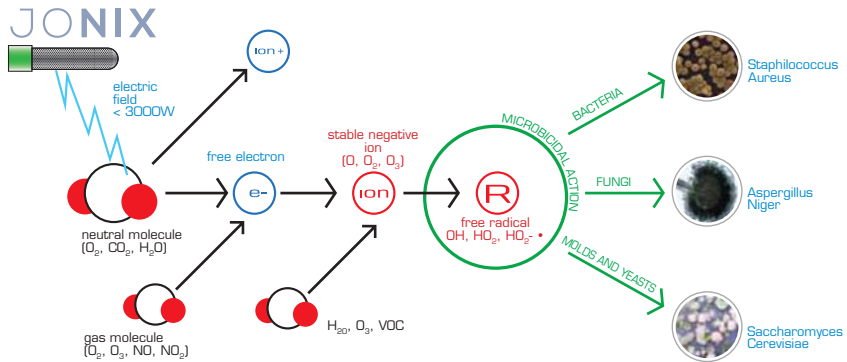
Do not open the panels for accessing the internal parts of the device without having first turned the system switch to “OFF”.



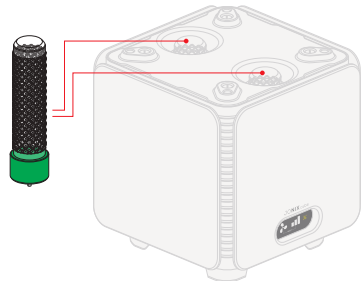
Not dispose of or leave the packaging materials within reach of children because it can be potentially dangerous.

3 - THE OPERATING SYSTEM

Among the wide range of air ionisers available on the market, the JONIX_{cube} ioniser is a top of the range device that combines high performance and a modern and attractive design. This air ioniser promotes the controlled formation of particular ionic species (electrically charged species) in the air, through an electrostatic field that simulates the natural process that normally occurs through solar radiation, mechanically or by means of other physical phenomena. The particular ionic species produced are historically and scientifically proven to be beneficial in people, especially those with a negative electrical charge (arising from individual or small groups of molecules that receive an electron).



The feature that makes the JONIX_{cube} stand out compared to similar products is the use of next generation ionising units, characterised by high efficiency and selectivity, which do not produce any significant increase of undesirable sub-products in irritating or even toxic amounts.

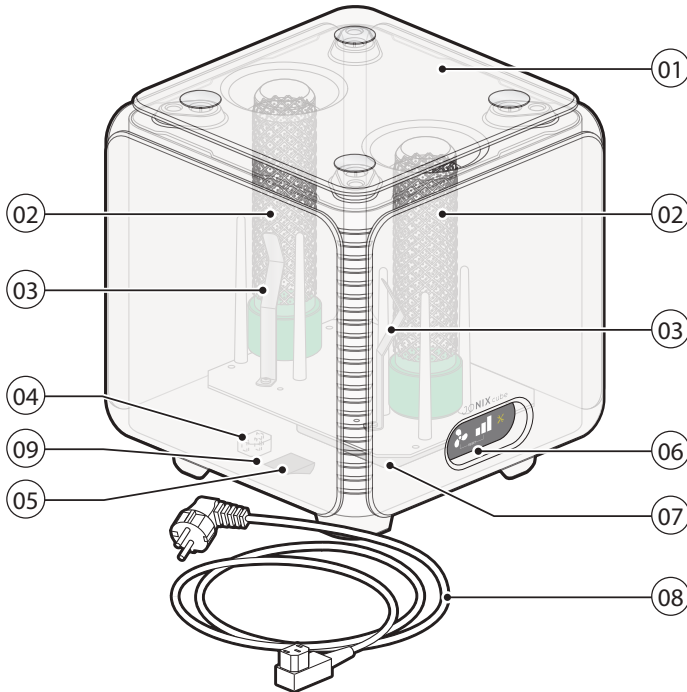


Other important features of the device are:

- **Low power consumption.**
- **Strong deodorising action:** it fights odours caused by smoke, cooking food, pets, footwear, sportswear, etc., giving the room an intense scent of fresh air.
- **Natural process:** it does not use or produce chemicals.

The device has a safety switch, positioned in such a way that when the protection cover (also accidental) is opened, the power supply to the ionizing units and the fan is removed.

4 - TECHNICAL DATA



4.1 COMPONENT DESCRIPTION

01	Protection lid	04	Power cable socket	07	Filter cover
02	Ionizing generator	05	Main switch	08	Power cable (provided)
03	Earthing spring	06	Control Panel	09	Protection fuses

4.2 TECHNICAL FEATURES

Model	Dimensions (WxDxH) [mm]	Power Supply	Consumption [W]	Electrical Absorption [mA]	Weight [Kg]
JONIX cube	238 x 238 x 260	230 V / ~1 / 50Hz	10	51	4

4.3 SPARE PARTS AVAILABLE ON ORDER

Code	Description	Notes
71KT000001	CUBE GENERATORS SPARE PART KIT	2 Ionising generators
JX40000001	CUBE POWER CABLE	3x0.75 cable, SP8848 schuko plug and 90° IEC60320 C13 connector
JX40000002	PROTECTION FUSE	1 quick blow glass fuse 5x20 1A 'F'

5 - RECEPTION, TRANSPORT AND STORAGE

5.1 PACKAGING

The JONIX^{cube} device, together with the accessories, is shipped in special protective packaging. The materials that were not installed for technical requirements are supplied packed with suitable packaging secured to the inside or outside of the device itself.

The packaging contains:

- JONIX^{cube}.
- Schuko type power plug.
- Operating and maintenance manual (with Declaration of Conformity).

5.2 HANDLING AND TRANSPORT



To handle the device use appropriate means, depending on the weight, as required by Directive 89/391/EEC and subsequent amendments.



Please take great care while unloading and positioning the devices, to prevent damaging the casing or components. Avoid uncontrolled rotations.

5.3 INSPECTION UPON RECEPTION

When you receive the device please check all its parts, in order to make sure that it has not been damaged during transport.

Any damage must be reported to the carrier, by filling in the relevant section on the delivery note and specifying the type of damage.



Any type of complaint must be sent in writing within eight days from receiving the goods.

5.4 STORAGE

In the event of extended storage keep the devices away from dust and sources of vibration and heat.



The Manufacturer disclaims any liability for damage due to incorrect unloading failure to protect the device from the elements.

5.5 HANDLING DEVICE IN OPERATING CONDITIONS

JONIX^{cube} device is easy movable in various environments, because it is provided with reduced dimensions (see Chapter 4 "Technical Data").

6 - INSTALLATION AND COMMISSIONING



ATTENTION! Before carrying out any operation on the devices read **ALL** the instructions in this manual carefully.

Definitions:		
<p>USER: Person, organisation or company who or which has purchased or rented the device and is going to use it for the intended purposes.</p>	<p>USER/OPERATOR: Individual who has been authorised by the user to operate the device.</p>	<p>QUALIFIED STAFF: Individuals who have completed a specific course and are therefore able to recognise the hazards arising from the use of this device and are able to prevent them.</p>

6.1 SAFETY STANDARDS



The Manufacturer disclaims any liability for failure to comply with the safety and prevention standards as described below.

The Manufacturer also disclaims any liability for damage caused by improper use of sanitisers and/or alterations carried out without prior authorisation.

- The device must be installed in strict accordance with the instructions contained in this manual.
- Comply with the laws in force in the country in which the device is installed, regarding the use and disposal of the packaging and products used for cleaning and servicing the device; you should also observe the recommendations given by the manufacturer of such products.
- **Before switching the device on check the integrity of the various components and of the electrical mains to which it is connected, making sure that it is fitted with a circuit breaker upstream of the power line as shown in this manual.**
- Never insert objects of any kind into the device, as coming into contact with live parts or electrical terminals may cause fires or electric shocks.
- Do not service or clean the device without first unplugging it from the mains.
- Worn or damaged parts must only be repaired or replaced by qualified staff and by following the instructions given in this manual.
- The spare parts must be approved by the Manufacturer.
- In the event of decommissioning or disposing of the device, follow the anti-pollution regulations set out by the country in which the device is installed.
- Do not pour water or any kind of liquids on the device.
- Place the device so that the power cable cannot be stepped on.

- **Use the type of power supply shown on the label. If you are not sure about the type of power supply available, ask your local retailer or electricity provider for assistance.**
- Do not touch the inside of the device, unless specified otherwise in the instructions contained in this manual.
- Never force the components when assembling: although it is made with high strength materials, the parts of the device can be damaged if handled incorrectly.
- Do not try to perform maintenance work on the device, except where specified in this manual. Opening or removing the outer casing may expose you to dangerous live parts or may involve other risks. All maintenance work must be carried out by authorised staff, except where specified in this manual.
- Unplug the device from the mains and contact qualified staff for assistance in one of the following cases:
 - The device has come into contact with water or liquids of any kind.
 - The device has been exposed to the elements.
 - A malfunction persists despite all the installation and/or maintenance procedures have been performed properly.
- The device comes with slots and openings for ventilation; do not block or cover these slots.
- Make sure that you always leave enough space for adequate ventilation at the bottom and around the side slots of the device.
- Place the device on a stable surface (avoid beds, sofas, blankets, carpets and so on).



IMPORTANT The installer and the user, when using the JONIX cube device, must take into account and solve all the other types of risk associated with the system. For example, risks arising from foreign bodies getting into the device or risks due to dangerous flammable or toxic gases at high temperature.

6.2 GETTING STARTED



- Check that the various components of the device are fully intact.
- Check that the documentation and any accessories for installation are contained in the package.



- Carry the device in its packaging as close as possible to the installation site.
- Do not rest weights or tools on the device, or place it on an unstable surface.

6.3 CHOOSING THE INSTALLATION SITE



- Do not put the device in places where there are flammable gases, acidic, aggressive and corrosive substances that can damage the various components beyond repair.
- Provide a minimum clearance, in order to install the device and carry out routine and special maintenance.

6.4 ELECTRICAL CONNECTIONS



ATTENTION! BEFORE STARTING ANY OPERATION, MAKE SURE THAT THE MAIN POWER SUPPLY IS DISCONNECTED!

- Make sure that the voltage and frequency shown on the plate match those of the electrical mains to which the device is connected.
- The electrical mains of the JONIX cube device must be used for the device only, there must be no other devices connected to the same power line. It is forbidden to use adapters or power strips.

6.5 ELECTRIC POWER SUPPLY

The JONIX cube device leaves the factory fully wired and only requires connection to a residential power socket as specified on the plate. Before making any connections make sure the mains voltage complies with what is shown on the label.

6.6 USING THE DEVICE

Fig. 01: Connect the device to the mains using the power cable provided.

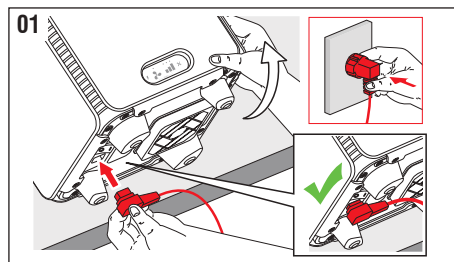
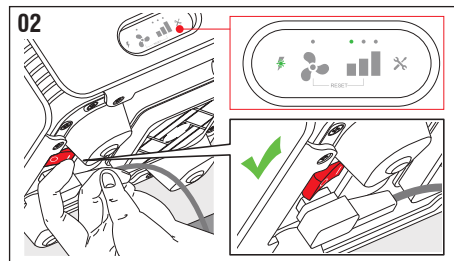
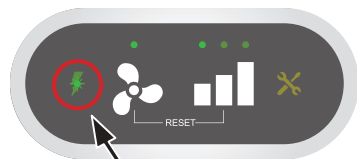


Fig. 02: The ON/OFF switch is located at the bottom of the device (see chapter 4). To switch the device on press the red 0/I button, switching it to I; you will hear a slight hissing sound coming from inside the device and the LED on the control panel will light up, indicating that the unit is switched on.



The presence of high voltage inside the device is indicated by the relevant light, located on the front panel, when the device is switched on.



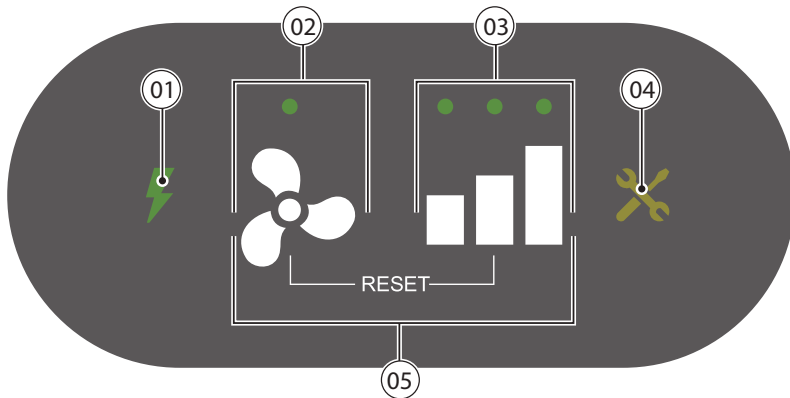
Fixed green LED: the device is on

6.7 CONTROL PANEL

The device control panel consists of:

- 2 control keys.
- 6 status indication LEDs.

The integrated control electronics allows operating the device at 3 different timing levels.




01 Power indicator LED	<input checked="" type="checkbox"/> Device On <input type="checkbox"/> Device Off
02 Enable / disable the fan	<input checked="" type="checkbox"/> Fan on <input type="checkbox"/> Fan off
03 Timing level key Remark: the operating level is indicated by the corresponding led. To switch to the next level, press the push-button .	Enabling level 1 (minimum): 2' On – 8' Off Enabling level 2 (average): 4' On – 6' Off Enabling level 3 (maximum): 7' On – 3' Off
04 Maintenance Warning LED	<input type="checkbox"/> No warning Device cleaning required warning (every 840 of actual operation of actuators) Ioniser replacement required warning (every 8740 of actual operation of actuators)
05 Maintenance Warning Reset Key	To reset, keep the keys and pressed for 5": all the LEDs will go off and the timer will be reset. When both keys are released, standard operation is resumed.

The operating level can be selected to meet the following requirements:

- The quantity of pollutants or odours present or produced in the room;
- If cooking is in progress;
- If someone is smoking;
- In case of odours;
- If there are more people than usual;
- To quickly dispel any unpleasant smell;
- Depending on the size of the room: the table here below shows the recommended operating levels:

Floor area (m ²) For rooms up to 2.7 m high	Level	Temporary settings to quickly dispel odours and pollutants
> 10	1	Set level 3 for 10'
11 ÷ 20	1	Set level 3 for 20'
21 ÷ 30	2	Set level 3 for 30'
31 ÷ 40	2	Set level 3 for 40'
41 ÷ 50	2	Set level 3 for 60'
51 ÷ 60	3	Set level 3
61 ÷ 70	3	Set level 3
71 ÷ 80	3	Set level 3

The fan can be disabled using the dedicated push-button  : this will reduce the noise without affecting operation.



Ventilation improves air movement in the rooms: this maximises the beneficial effects of the device.



7 - MAINTENANCE

7.1 WARNINGS



BEFORE CARRYING OUT ANY MAINTENANCE OPERATION MAKE SURE THAT THE DEVICE IS NOT AND CANNOT ACCIDENTALLY BE POWERED ELECTRICALLY. YOU MUST THEREFORE UNPLUG THE DEVICE BEFORE CARRYING OUT ANY MAINTENANCE.

- It is the duty of the user to perform all the maintenance operations on the device listed below.
- If you experience a malfunction, unplug the device from the mains and contact qualified staff (retailer, the Manufacturer).

The frequency of the operations to be performed to ensure proper maintenance of the sanitising devices depends mainly on the quality of the treated air. Failure to perform adequate and systematic maintenance over time can result in a structural and functional deterioration of the device and of its performance.

7.2 ROUTINE MAINTENANCE

The JONIX^{cube} device requires little maintenance, consisting in periodically and regularly cleaning the ionising generators and mesh filter to protect the fan.

The device signals the need for maintenance of the generators, through the indicator light shown on the display, every 900 hours of operation.

However, when operating in highly contaminated environments, the electronics of the device could intervene even if this time has not yet elapsed.



Clean the ionising generators whenever the corresponding LED starts blinking.



Flashing LED: maintenance required

7.2.1 Cleaning the ionising generators

Fig. 03: Switch the ioniser off by switching the On/Off button to **0**.

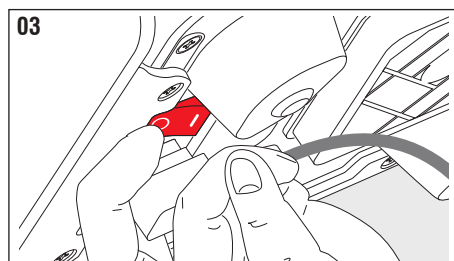


Fig. 04: Put the device on a flat surface. Remove the plug connected to the mains.

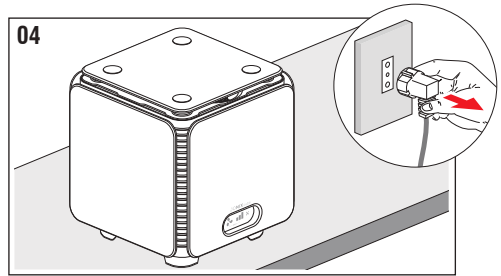


Fig. 05: Remove the lid by pulling it upwards.

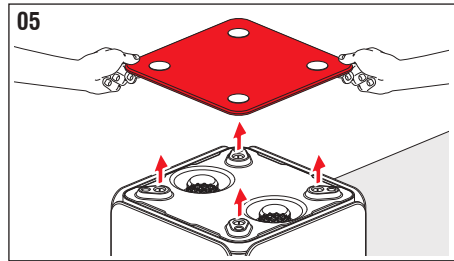


Fig. 06: Gently unscrew the ionising generators by acting on the glass surface that can be reached by hand through the special slots. Remove the mesh surrounding the tube.



If this is too difficult, turn the mesh slightly around the glass.

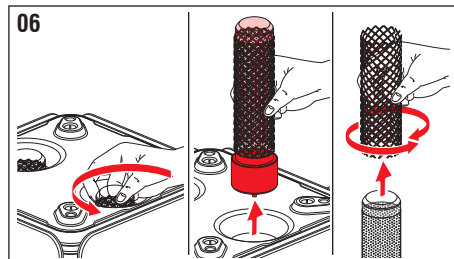
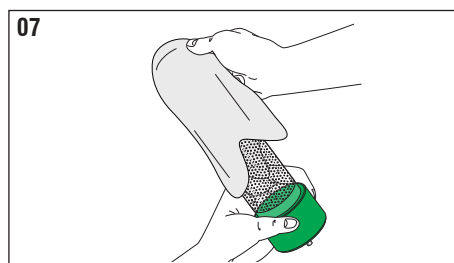


Fig. 07: Clean the glass using a damp cloth.



Do not use liquid cleaners or sprays, soap or the like.



Check that the ionizing generator is in good conditions: there must not be any cracks or other damage; otherwise it must be replaced.

As soon as you notice a whitish layer on the perforated metal plate inside the glass it means that the ionizing generator needs replacing.

The ionizing generators must usually be replaced within 18 months of use.

Fig. 08: Wash the mesh under running hot water and dry it thoroughly with a cloth.
Attention: ensure that the mesh is perfectly dry before putting it back!



The manufacturer is not liable for any damage to the device caused by the presence of humidity or water on the outer mesh.

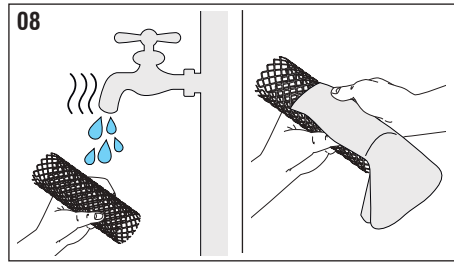


Fig. 09: Put the outer metal mesh back on the glass tube so that it fully overlaps the internal plate.



In any case ensure a minimum distance of at least 3 mm from the base of the generator.

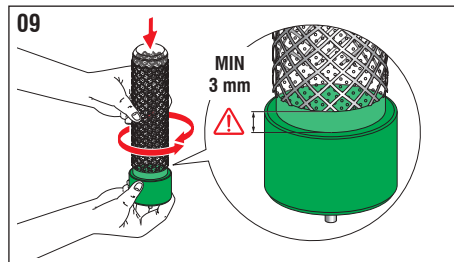


Fig. 10: Screw the ionizing generators back into place by acting again on the glass surface that can be reached by hand through the special slots.

ATTENTION: do not overtighten the screw after reaching its end stop.



Check that the earthing spring is in contact with the outer mesh once the ionizing tubes have been screwed back into place. Otherwise contact the manufacturer.

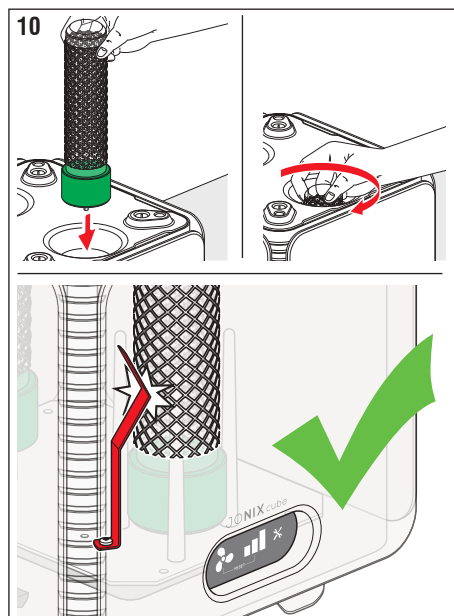


Fig. 11: Put the lid back on the device by pushing it until the parts are locked in place.

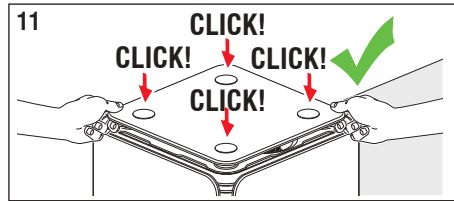


Fig. 12: Reconnect the plug. Switch the ionising device on by switching the On/Off button to I.

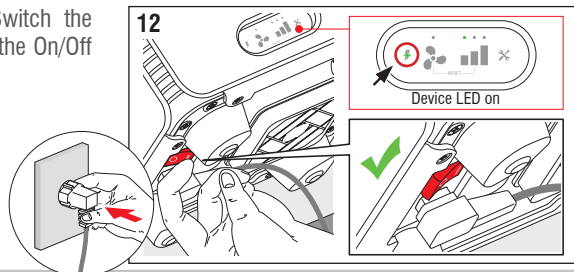


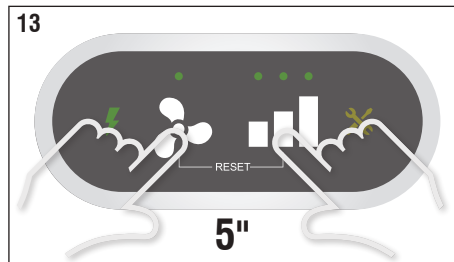



Fig. 13: To reset, keep the keys  and  pressed for 5" until maintenance LED will go off. Check that the device works, you should hear a slight hissing sound.



 The ionising generators can be re-enabled only after the light has gone off.

 Failure to clean the ionising generators when indicated by the device leads to a drop in system performance.

7.2.2 Cleaning the filter

Clean the filter at the bottom of the device during every tube maintenance operation. However, we suggest checking periodically the filter status and quickly removing any dust residues and any other residues that may block the air flow.

Fig. 14: Remove the filter cover by pressing the sides and pulling towards you.

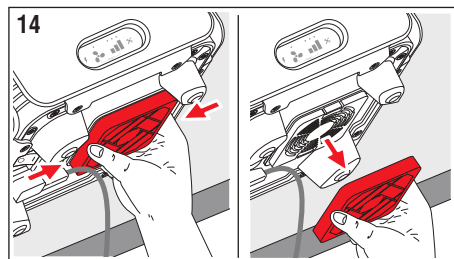


Fig. 15: Wash the mesh filter under running water and dry it with a cloth.

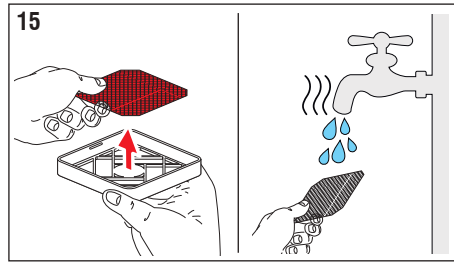


Fig. 16: Using a damp cloth, wipe the plastic filter cover and the finger guard grille fitted at the bottom of the device.

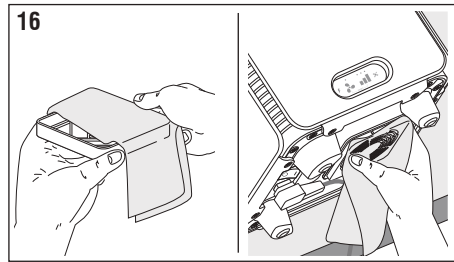
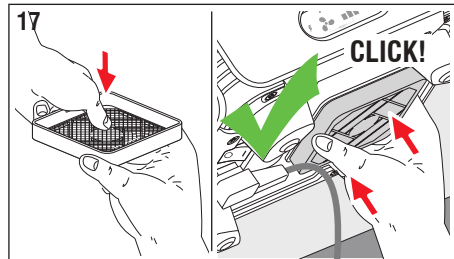


Fig. 17: Put the filter back into the filter cover.

Reassemble the filter cover with the snap fastening. Press it onto the bottom of the device until the parts are locked in place.



7.2.3 External cleaning of the equipment

Clean the outside of the device with a damp cloth.



Do not use liquid cleaners or sprays, soap or the like.

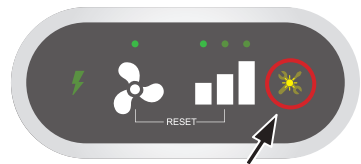
7.3 SPECIAL MAINTENANCE

The only part that is subject to wear is the ionising generators, whose performance drops over time. Components must be replaced when signs of wear appear, indicated by oxide on the internal mesh of the ionising generator, which will make it turn white, and by the glass looking dull.

The JONIX cube device is designed to indicate, through a special LED, the need to replace the ionising tubes approximately every 9000 hours of operation.



Replace the condensers as soon as the relevant LED stays on permanently.



Fixed led: replacement required

7.3.1 Replacing the ionising generators

Fig. 18: Switch the ionising device off by switching the On/Off button to **0**.

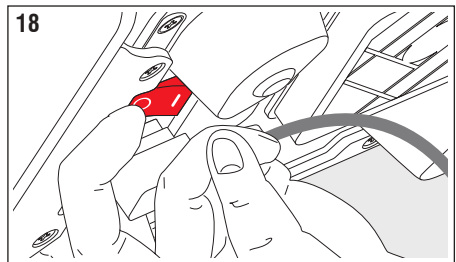


Fig. 19: Put the device on a flat surface. Remove the plug connected to the mains.

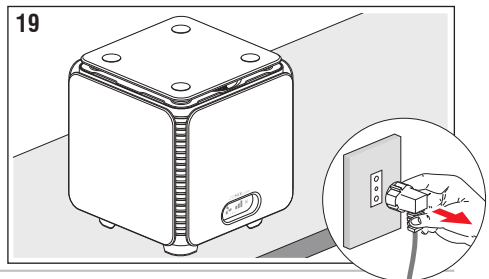


Fig. 20: Remove the lid by pulling it upwards.

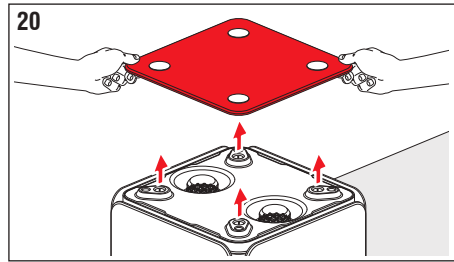


Fig. 21: Gently unscrew the ionising generators by acting on the glass surface that can be reached by hand through the special slots.

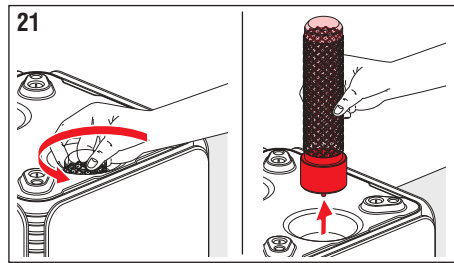


Fig. 22: Screw the new ionizing generators into place by acting again on the glass surface that can be reached by hand through the special slots.

ATTENTION: do not overtighten the screw after reaching its end stop.



Check that the earthing spring is in contact with the outer mesh once the ionising tubes have been screwed back into place. Otherwise contact the manufacturer.

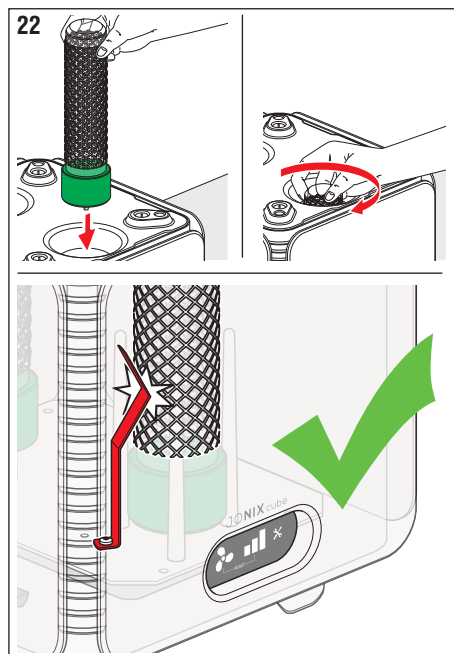


Fig. 23: Put the lid back on the device by pushing it until the parts are connected to each other.

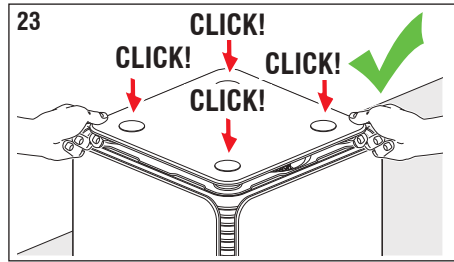


Fig. 24: Clean the outside of the device with a damp cloth.



Do not use liquid cleaners or sprays, soap or the like.

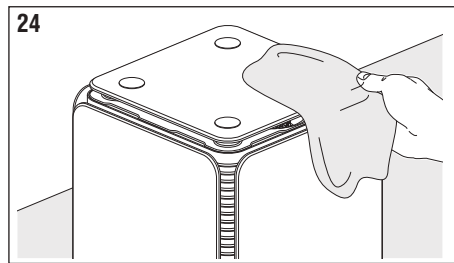


Fig. 25: Reconnect the plug. Switch the ionising device on by switching the On/Off button to I.

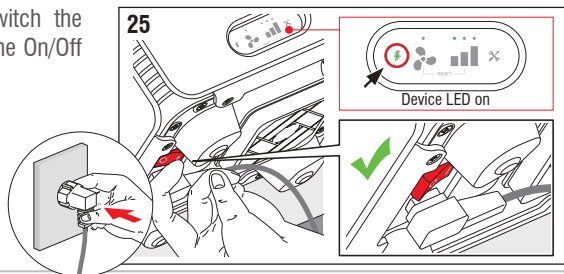


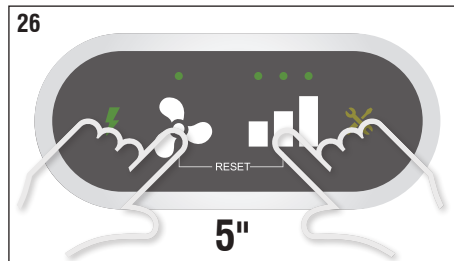


Fig. 26: To reset, keep the keys  and  pressed for 5" until maintenance LED will go off. Check that the device works, you should hear a slight hissing sound.



The ionising generators can be re-enabled only after the light has gone off.



Failure to replace the ionising generators when indicated by the device leads to a drop in system performance.



In the event that a device malfunction persists, unplug it from the mains and contact qualified staff.

8 - OPERATIONAL CHECK AND TROUBLESHOOTING

This section summarises the most common problems that may arise when using the unit. Before contacting customer services, carry out the checks listed below.

PROBLEM	POSSIBLE CAUSE	SOLUTION
The green LED indicating device operation is switched off.	The unit is not powered.	Check that the switch is in position "I".
		Check that the plug is connected to the mains power socket.
		Check that the plug is connected to the power socket on the device.
		Check that the power socket to which the device is connected works.
		Check that the lid is fitted properly and locked into place.
		Make sure that the fuses next to the socket in the relevant door are not blown. If necessary, contact your local retailer.
No sizzling noise comes from inside the device and the yellow LED that indicates that maintenance is required is blinking.	The ionising generators and fan mesh filter need cleaning.	Follow the instructions in section "7.2 - Routine Maintenance".
No sizzling noise comes from inside the device and the yellow LED that indicates that maintenance is required is on and steady.	The ionising generators need replacing.	Follow the instructions in section "7.3 - Extraordinary Maintenance".
No sizzling noise comes from inside the device and the yellow LED that indicates that maintenance is required is off.	The ionising generators are faulty.	Follow the instructions in section "7.3 - Extraordinary Maintenance".



In the event that you experience a malfunction other than those described above contact qualified staff (retailer, Manufacturer).

Unplug the device from the mains and contact qualified staff for assistance even in the event of one or several of the cases below:

- The power cable is damaged or worn.
- The plug is damaged or worn.
- Water or liquid has been poured onto the device.
- In the event that there is a malfunction despite all the installation procedures have been carried out properly.

9 - DISPOSAL

When JONIX cube devices are no longer used they must be disposed of in compliance with the regulations in force in the country of installation. The unit consists of the following materials:

- Stainless steel.
- Aluminium.
- Glass.
- Nylon.
- Plastic.
- Paper and Cardboard.
- Wood.



WASTE ELECTRICAL AND ELECTRONIC EQUIPMENT MANAGEMENT

This product falls within the application scope of the Directive 2012/19/EU concerning the management of waste electrical and electronic equipment (WEEE). Equipment must not be disposed of with household waste as it is made of different materials that can be recycled at special facilities. Please inquire through your municipal authorities as to the location of the eco-friendly waste management sites where waste can be received for disposal and its subsequent recycling as recommended. Furthermore, please note that, when an equivalent appliance is purchased, the seller is expected to collect free of charge the old product to be disposed of. The product is not potentially dangerous for human health and the environment, as it does not contain any harmful substances according to the Directive 2011/65/EU (RoHS), but if disposed of freely in the environment, it might adversely affect the ecosystem.

Read the instructions carefully before using the equipment for the first time. It is strongly recommended not to use the product for any purpose other than that for which it was designed, to prevent the risk electric shock if the product is used incorrectly.

NOTES

.....

.....

.....

.....

WARRANTY CONDITIONS

1. With this document the Manufacturer certifies that the product has been built correctly, top quality materials have been used and all inspections necessary for compliance with European Community Directives have been performed. The product is covered by a warranty lasting 24 months from the date of delivery to the User. Delivery must be proven by the purchase document and the copy of the filled out identification form. These documents must be shipped to the After-Sales Centre with the equipment. Persons wishing to make use of the warranty must inform of the fault within 8 days of its discovery for the effects and purpose of art. 1495 of the Civil Code. The warranty is limited to replacement or repair of individual components or pieces with manufacturing defects and does not cover costs related to transfer of technical staff, transport, packaging etc. Breakdowns, faults or damage deriving from poor maintenance, incorrect power supply, negligence, inexperience and other causes not imputable to the Manufacturer and parts subject to normal wear are not covered by the warranty. The warranty does not cover breakdowns caused by failure to carry out routine maintenance due to customer negligence. This warranty does not provide for any reimbursement for direct or indirect damages of any kind caused to persons or objects due to equipment inefficiency.
2. The warranty is automatically rendered null and void whenever the equipment is repaired, modified or tampered with by the purchaser or unauthorised third parties. The liability for damage caused by faulty products expires after 10 years from the date in which the Manufacturer put the products on the market, after this time it becomes the user's responsibility, as envisioned by the 85/374/EEC Directive.
3. To have work carried out under warranty the purchaser must only contact the dealer, Manufacturer-authorized after-sales centres or the Manufacturer itself. The warranty gives the right for free replacement of faulty parts. It does not, however, give the right for replacement of the entire equipment.
4. In the case of disputes regarding application of the warranty, quality or conditions of the equipment delivered, the purchaser cannot suspend or delay total payment or payment of the instalments.
5. No reimbursement can be requested by the purchaser for loss of production.
6. The warranty is rendered null and void if:
 - a. The equipment is damaged by a fall, exposure to fire, spilt liquids, lightening, natural disasters or, however, causes not imputable to manufacturing defects.
 - b. Incorrect installation.
 - c. Incorrect mains connection (incorrect power supply nominal voltage) or suitable protection devices have not been installed.
 - d. The serial number has been removed, cancelled or altered.
7. The components to be replaced under warranty, must be returned to JONIX Srl which will then send the appropriate spare parts. Any changed parts that are not returned will be charged.
8. The Manufacturer do not have to supply replacement equipments during the repair period.
9. For tax purposes spare parts will only be provided under warranty where the relevant limitations set out in the terms and conditions of the warranty are respected.
10. For any other eventuality not provided for by this Warranty Certificate and the regulations, consult the Italian Civil Code.
11. Invoices for labour, travel and call-out must be paid on their receipt.
12. The manufacturer and the dealer will comply with all data processing laws in force, including those relative to safety measures and in compliance with the specifications given in the data processing information sheet.

EC DECLARATION OF CONFORMITY

JONIX S.R.L.

LEGAL SITE Viale Spagna, 31/33 – 35020 Tribano (PD)
 SCIENTIFIC SITE Via Tegulaia 10/b - 56121 Pisa
 OPERATIVE SITE Via Romagnoli, 12/A - 40010 Bentivoglio (BO)

**declares that
 the following products**

<i>DESCRIPTION</i>	Devices for active sanitation and air purification	
<i>MODELS</i>	<ul style="list-style-type: none"> • Cube ○ Mate - mini Mate ○ Steel 	<i>Select the model to which the declaration refers to</i>
<i>PRODUCT TYPE</i>	<ul style="list-style-type: none"> • ○ ○ ○ 	<i>Select the model to which the declaration refers to</i>
<i>product code</i>		xxx
<i>serial n°</i>		xxx

/ F U L F I L S

to the requirements of the Machinery Directive 2006/42/EC

reference standard

EN 12100:2010
 EN 60204-1:2016

OTHER APPLICABLE DIRECTIVES

2011/65/EU ROHS Directive
 2014/30/EU EMC Directive (ex 2004/108/EC)
 2014/35/EU LVD Directive (ex 2006/95/EC)

reference standard

EN 60335-2-65:2003/A11:2012

Household and similar electrical appliances. Safety. Particular requirements for air-cleaning appliances

This declaration of conformity is issued under the total sole responsibility of the manufacturer

General manager **Mauro Mantovan**

function



signature

JONIX

pure living

JONIX srl
support@jonixair.it
www.jonixair.it



Registered office
viale Spagna 31/33
35020 Tribano (PD) - Italy
tel +39 049 9588511
fax +39 049 9588522

Scientific headquarters
via Tegulaia 10/b
56121 Pisa - Italy
tel +39 050 985165

Operational headquarters
via Romagnoli 12/a
40010 Bentivoglio (BO) - Italy